

# National Park Service Signs

2024/2025



Pea Ridge National Military Park - Benton County, Arkansas



NATIONAL PARK SERVICE SIGNS & MORE

**970-641-1675**

[www.woodproductsigns.com](http://www.woodproductsigns.com)



Made in the USA  
Gunnison, Colorado







# Wood Product **SIGNS**

## ABOUT US

Wood Product Signs has been working with the Federal Government since 1986!

We offer computer routed signs (HDPE Plastic, Western Red Cedar, Oak, Sign Foam & MDO Plywood), Reflective HDO Plywood and Aluminum signs, along with everything you need to complete your sign project.

While our customer base continues to grow, we are still a small, family-owned business. We are located in the beautiful Rocky Mountains of Colorado.

All National Park Signs we manufacture are in strict compliance with the NPS UniGuide

Custom signs are also available. If there is something that you cannot find in our catalog, please do not hesitate to contact us. Custom sign orders are welcome.

**1-970-641-1675**

[www.woodproductsigns.com](http://www.woodproductsigns.com)



Taylor Heffner, Owner

GSA CERTIFIED

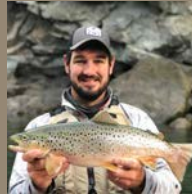
SAM ACTIVE

NFIB & IPP REGISTERED

**Quantity Discounts Available!**



## MEET OUR STAFF!



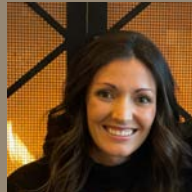
TAYLOR



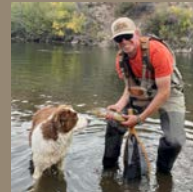
EMILY



MICHAEL



PAITRA



BOBBY



JOSH



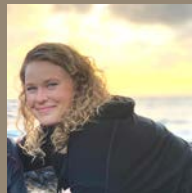
CRAIG



ART



TRINITY



TAYLER



MAPLE & HARLEY



AMY



**ORDER BY PHONE**  
970-641-1675



**FIND US ONLINE**  
[www.woodproductsigns.com](http://www.woodproductsigns.com)



**ORDER/CONTACT US BY EMAIL**  
[accounting@woodproductsigns.com](mailto:accounting@woodproductsigns.com)

# Arrowheads



Routed Cedar  
& HDU Foam



Full Color Shaded Artwork  
Digital Graphic



2 Color Flat Artwork  
Digital Graphic



Full Color Flat Artwork  
Digital Graphic

Height	Cedar & HDU Foam Thickness	Routed Cedar	High Density Urethane Foam	Routed 1/2" Acrylic	Digital Graphic Peel & Stick	Digital Graphic on HDO Backing
12"	1.5"					
15"	1.5"					
18"	1.5"					
24"	1.5"					
27"	1.5"					
30"	1.5"					
36"	2"					
42"	2"					
48"	2"					
54"	2"					
66"	2"					
72"	2"					

Call for Pricing



Acrylic Arrowhead inlaid  
into a plastic sign



Cedar Arrowhead installed  
on a stone column



Digital Graphic inlaid  
into a cedar sign



Digital Graphic ready to apply  
into a routed pocket for a  
flush inlay

## Routed Arrowheads

Our Routed Arrowheads are made to NPS UniGuide Standards. The thickness of the Arrowhead depends on the size and the material. Please refer to the chart above.

We offer two options for installing your Arrowheads; inserts or keyhole slots. Inserts allow the Arrowhead to be mounted to a stud or bolt. A keyhole slot is a vertical slot that allows an Arrowhead to be hung on a nail or a screw. Inserts or keyhole slots are included in the price of the Arrowhead, only upon request.

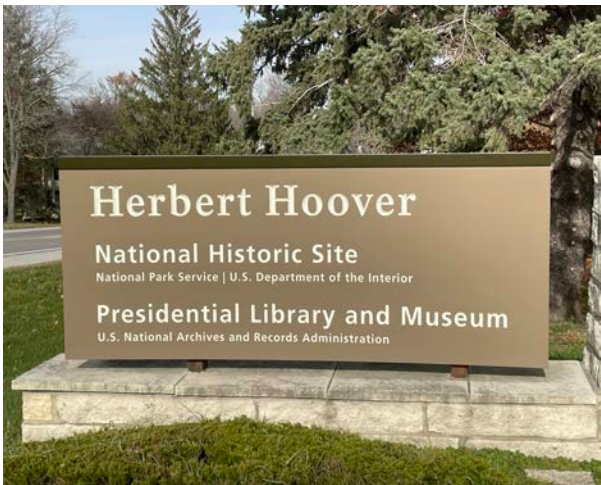
## Digital Graphic Arrowheads

Our Digital Graphic Arrowheads are made to NPS UniGuide Standards. We offer full color shaded artwork, 2 color flat artwork and full color flat artwork. Digital graphics are cut to the shape of the Arrowhead. Digital Graphic Arrowheads can be applied to 1/8" lexan and inlaid into a routed pocket on a larger sign, or applied to 3/4" HDO plywood backing. Arrowheads can be ordered as a peel and stick decal to attach to a variety of surfaces. We also supply magnetic Arrowheads for service vehicles.



# Park Identification Signs

Park Identification Signs are made according to NPS UniGuide standards. Please contact us for pricing.





# Park Identification Signs





# Custom Entrance Signs

We specialize in making custom signs. Many of these signs were specially made to reflect the uniqueness of each individual National Park. Please contact us for pricing.





# Sign Bases, Mounting & Installations

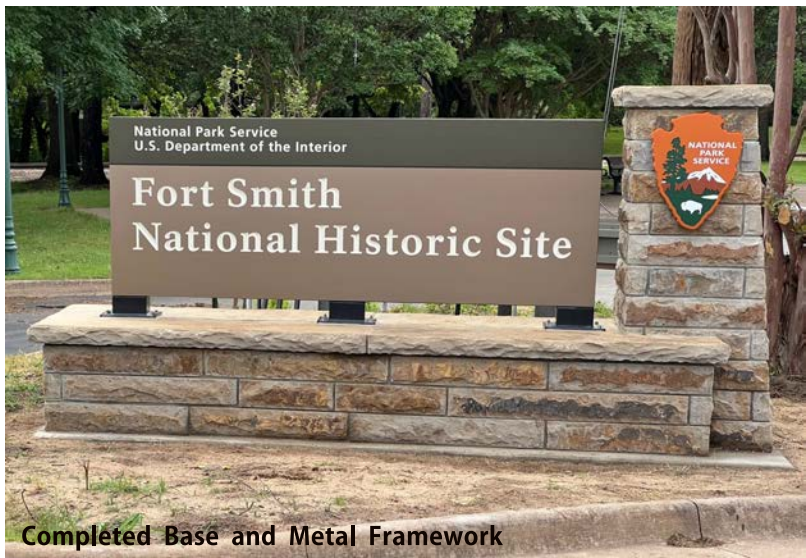
We provide engineered drawings, fabricate metal frameworks, build stone bases, and complete full-service installations. Please contact us to discuss the details of your project!



Hand-built Custom Metal Framework and Posts



Standard Metal Framework (see detailed drawings below) and Stone Base



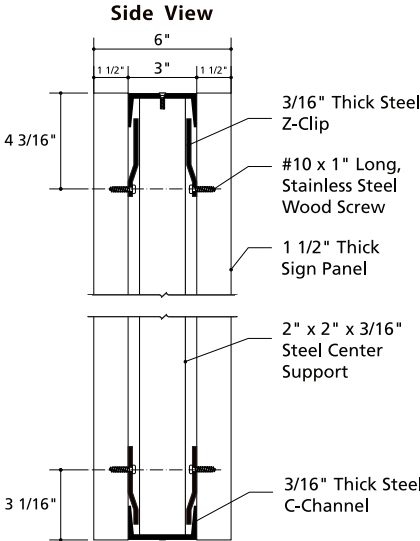
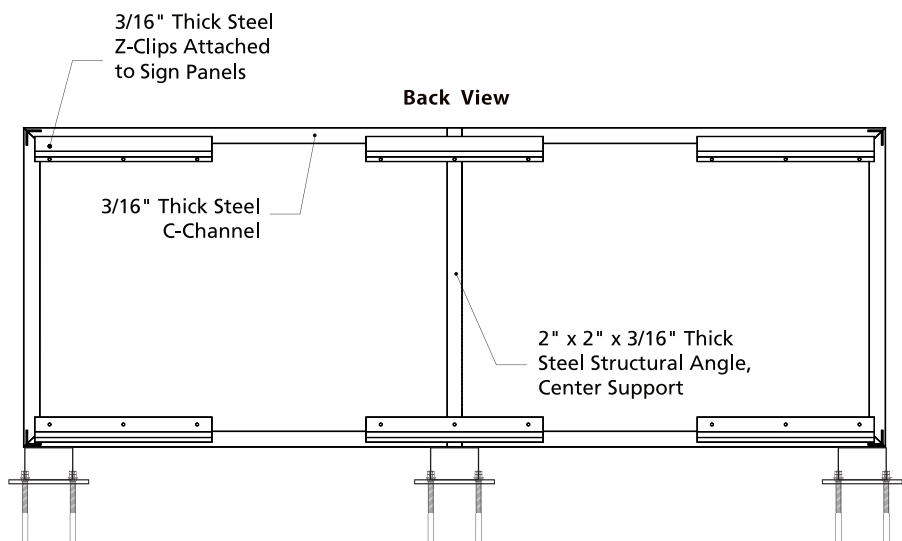
Completed Base and Metal Framework



Custom Metal Framework and Brick Base

## Metal Framework Drawings

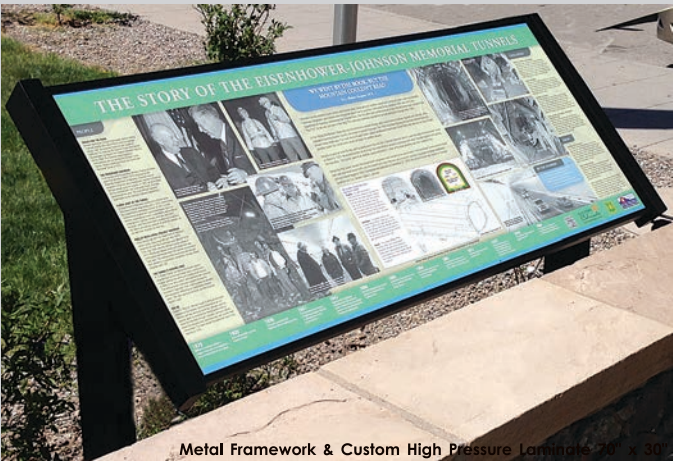
Fully customizable to fit your unique sign panel



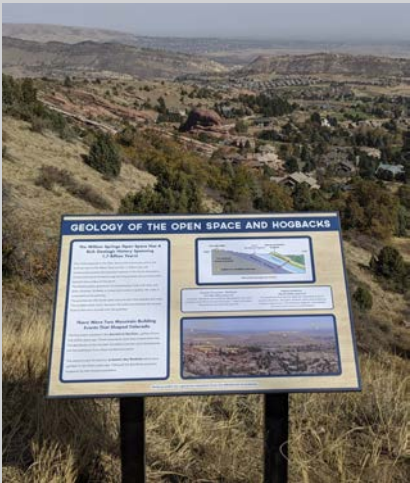


# CHPL & Visitor Information Signs

Our wayfinding or interpretive sign panels are custom made and printed to meet your specific sign needs. We offer custom high pressure laminate (CHPL) signs in thicknesses ranging from 1/16" up to a self supportive 3/4" thick panel. Our panels are not glued, they are one solid piece after they are pressed. There is nothing to delaminate or come apart, making it easy to cut and shape which results in a highly durable interior or exterior material with a 10 year limited warranty.



Our CHPL signs can be mounted into a variety of bases, including custom built log bases and powder coated aluminum bases.



# Custom Trail & Visitor Information Signs



Plastic Sign 24" x 12"



Aluminum Sign 60" x 36"



Cedar Sign 47.5" x 36"



Cedar Sign w/ aluminum sliders



# Aluminum Signs



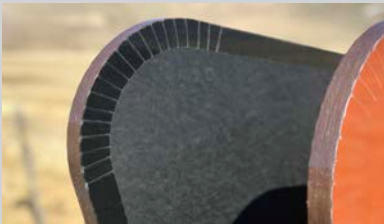
## Clear Coat

- Highly recommended for harsh conditions/snow burial areas



## Brown Vinyl Backing

- For highly visible areas to reduce glare off the sign back



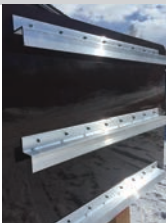
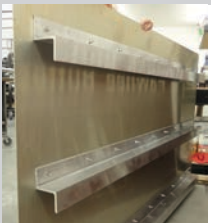
## Edge Tape

- Recommended for snow burial areas



## Sliders

- Open & Closed, Seasonal Closures, or Custom Messages
- Security feature/locks available



## Z Bar

- Use to stiffen sign and/or allow for alternate mounting options
- Available as raw aluminum or powder coated brown



## Digital Graphics

- Add extra detail, color, or logos



# Laser Engraved Plaques

## New Style Plaques



New style with artwork



New style with artwork



New style with text



New style with text

## Laser Engraved Plaques & Dedication Arrowheads

Each plaque or dedication arrowhead is laser engraved into western red cedar. The plaque or Arrowhead is cut to shape and chamfered by hand. We apply a clear natural finish and attach a metal hanger on the back. Please be advised, WPS cannot guarantee likeness in the color of wood grain used for laser engraved plaques & Arrowheads. Each piece of wood used is unique. Laser engraved cedar plaques cannot and will not be homogeneous in color.

## Old Style Plaques



Old style with artwork



Old style with text



Old style with artwork

14" x 9" **Call for pricing**  
12.5" x 8"



# Dedication Arrowheads

## New Style Arrowheads



11.5" x 15"  
9" x 12" **Call for pricing**



12" x 15"  
9.5" x 12" **Call for pricing**



## Custom Dedication Plaques



## Laser Engraved Name Plate



10" x 2.5"  
**Call for pricing**

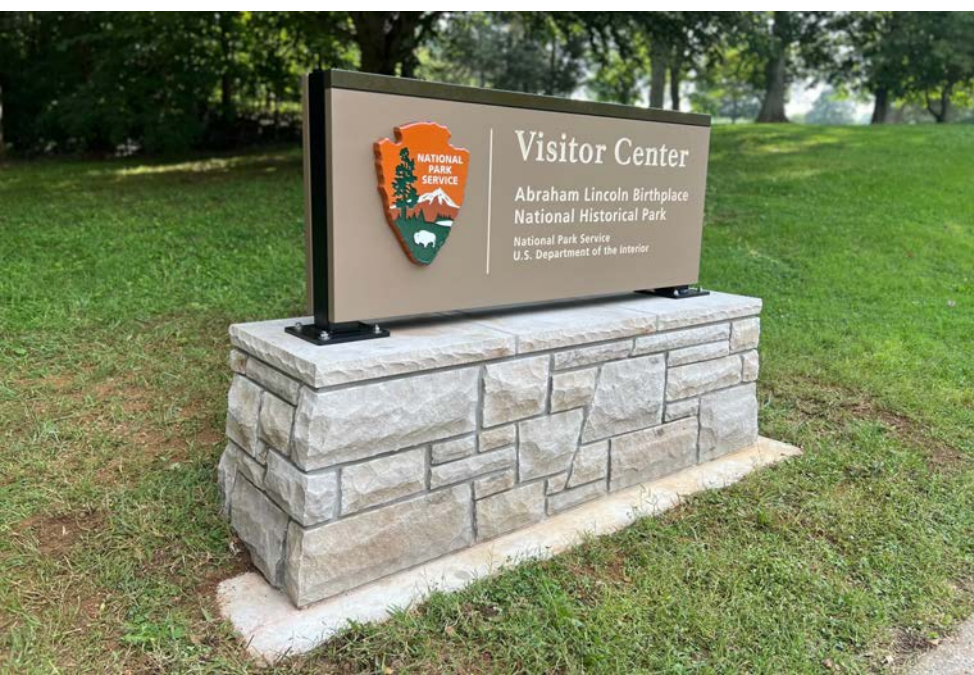
Please allow 4 weeks for normal delivery time.  
Rush orders may be available upon request and are subject to a rush fee and expedited shipping charges.  
Custom park logos or graphics may be added for additional fees.





Mt. Justice - Marble, Colorado

visit [www.woodproductsigns.com](http://www.woodproductsigns.com) to view more sign photos



#### We Offer

- Friendly Customer Service
- Small Business
- 30 Years of Experience Making NPS Signs
- GSA Certified, CCR, ORCA, D&B and NFIB Registered
- No Minimum Order!

- **Park Identification Signs**
- **Entrance Signs**
- **Custom Signs**
- **Interpretive Signage**
- **Arrowheads**
- **Dedication Arrowheads**
- **Retirement Plaques**
- **Custom Log Framework**
- **Custom High Pressure Laminate**
- **Installation**
- **Standard MUTCD Aluminum Signs**
- **Sign Bases**

**970-641-1675**